

The ARM-ER® approach to caries / sensitivity management in permanent teeth.



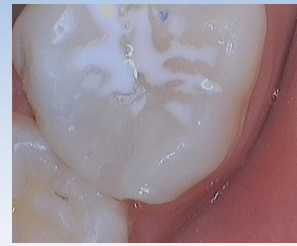
After silver fluoride application. The dark area indicates arrested decay.



Black 'callus' is cleaned and hard, sound dentine is revealed



White 'base material' placed.



White filling is placed



In patients, where cleaning is difficult or the mouth is drier, silver fluoride may need to be re-applied every six months.

This simple application improves the strength of the tooth, and supports the retention and of natural teeth in the mouth.



Surface staining is temporary and only decay is permanently stained - this indicates it has been arrested.



2 weeks after application— remineralised, desensitised and only the decay is stained. Gum health is also improved when the silver continues to inhibit plaque formation.

Using silver fluorides to:

AssessArrest?

Redefine.....Remineralise?

Manage —

Educate and then

⇒ **Review?**

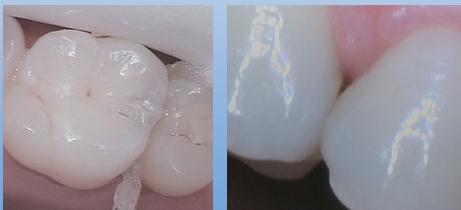
⇒ **Repeat?**

⇒ **Restore?**

⇒ **Rehabilitate?**

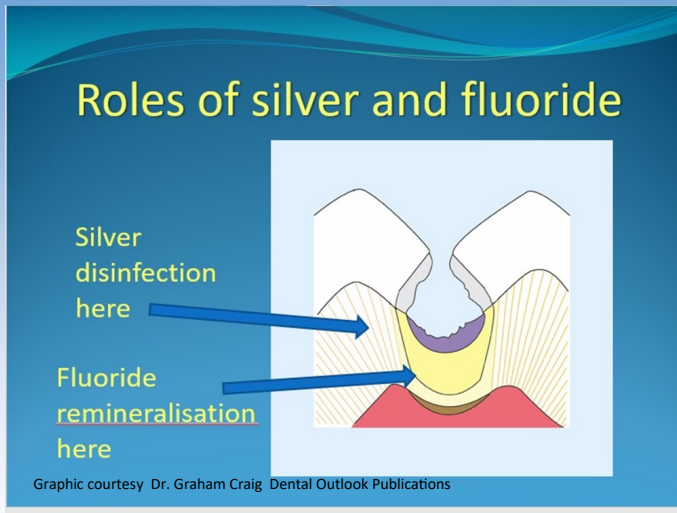
⇒ **Re-establish?**

Black Diamonds Rock!!



Using silver fluorides to remineralise early caries between teeth can prevent fillings and preserve tooth structure.

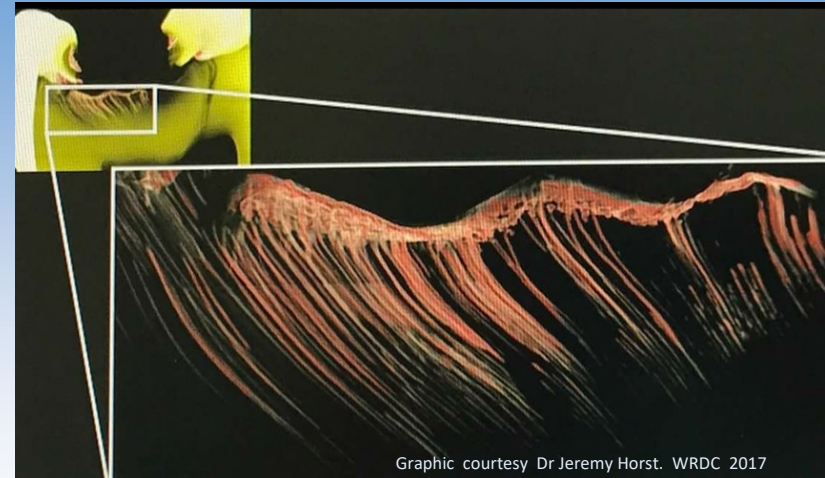
How does it work?



When can it be used?

Silver and fluoride ions are absorbed into the affected part of the tooth and continue to protect against ongoing bacterial activity on a hardened tooth surface.

This also makes the tooth much less sensitive!



The use of silver fluorides to address and assess the status of decay in an affected tooth is an easy, safe and very effective method of managing the plans for ongoing treatment for a single tooth or several teeth. It often means that treatment recommendations can be planned without compromising the teeth until the patient is able to have further treatment if this is recommended.

In the adult patient it is ideal when the patient is:

- ♦ very anxious
- ♦ medically compromised
- ♦ needs more time to access care
- ♦ unable to have treatment completed in one visit
- ♦ unable/ unlikely to easily access dental care.



ARM-ER. ~ Assess : Redefine: Manage - Educate & Review? Repeat? Restore? Rehabilitate? Re-establish?

Treating decay, and sensitivity to saving teeth for the future.

